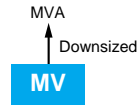


**Alchip™ - MV Series**

- Height 5.2 to 10.0mm
- Suitable to fit for downsized equipment
- Solvent resistant type (see PRECAUTIONS AND GUIDELINES)
- RoHS Compliant
- MV series will be discontinued, strongly recommended MVA series

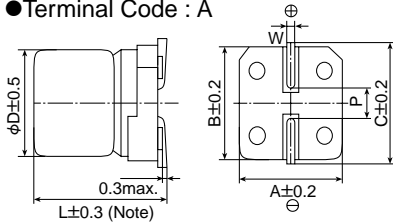


**◆ SPECIFICATIONS**

Items	Characteristics										
Category Temperature Range	-40 to +85°C										
Rated Voltage Range	4 to 63V <sub>dc</sub>										
Capacitance Tolerance	±20% (M) (at 20°C, 120Hz)										
Leakage Current	I=0.01CV or 3μA, whichever is greater. Where, I : Max. leakage current (μA), C : Nominal capacitance (μF), V : Rated voltage (V) (at 20°C after 2 minutes)										
Dissipation Factor (tanδ)	Rated voltage (V <sub>dc</sub> )	4V	6.3V	10V	16V	25V	35V	50V	63V	(at 20°C, 120Hz)	
	tanδ (Max.)	D55 to F60	0.42	0.24	0.20	0.16	0.14	0.12	0.10		0.12
Low Temperature Characteristics (Max. Impedance Ratio)	Rated voltage (V <sub>dc</sub> )	4V	6.3V	10V	16V	25V	35V	50V	63V	(at 120Hz)	
		Z(-25°C)/Z(+20°C)	7	4	3	2	2	2	2		2
	Z(-40°C)/Z(+20°C)	D55 to F60	15	10	8	6	4	3	3		3
		H63 to JA0	—	10	8	6	4	3	3		3
Endurance	The following specifications shall be satisfied when the capacitors are restored to 20°C after the rated voltage is applied for 2,000 hours at 85°C.										
	Capacitance change	≤±20% of the initial value									
	D.F. (tanδ)	≤200% of the initial specified value									
Shelf Life	The following specifications shall be satisfied when the capacitors are restored to 20°C after exposing them for 500 hours at 85°C without voltage applied. Before the measurement, the capacitor shall be preconditioned by applying voltage according to Item 4.1 of JIS C 5101-4.										
	Capacitance change	≤±15% of the initial value									
	D.F. (tanδ)	≤150% of the initial specified value									
	Leakage current	≤The initial specified value									

**◆ DIMENSIONS [mm]**

● Terminal Code : A



Note : L±0.5 for H63 to JA0

Size code	D	L	A	B	C	W	P
D55 & D60	4	*5.2	4.3	4.3	5.1	0.5 to 0.8	1.0
E55 & E60	5	*5.2	5.3	5.3	5.9	0.5 to 0.8	1.4
F55	6.3	5.2	6.6	6.6	7.2	0.5 to 0.8	1.9
H63	8	6.3	8.3	8.3	9.0	0.5 to 0.8	2.3
HA0	8	10.0	8.3	8.3	9.0	0.7 to 1.1	3.1
JA0	10	10.0	10.3	10.3	11.0	0.7 to 1.1	4.5

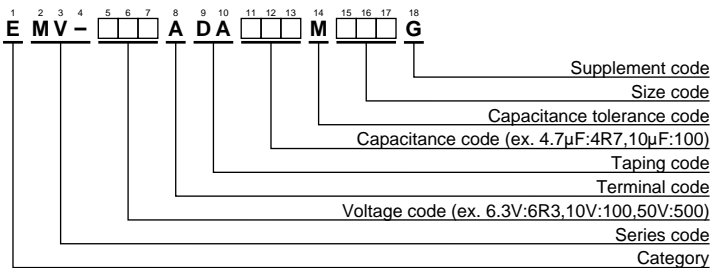
\* : L=5.7 for D60, E60 and F60.

**◆ MARKING**

EX)6.3V100μF



**◆ PART NUMBERING SYSTEM**



Please refer to "Product code guide (surface mount type)"